



The Neutron Series

Distributed Network Management Solution

Flexible, Scalable, Enterprise-Class Management for Networks Both Large and Small

Today's networks must be flexible, robust and as effective as the organizations they serve. Often comprised of different sizes, infrastructures and locations, these distributed networks can place an enormous burden on in-house IT personnel or managed service providers looking to manage, monitor and upgrade a potentially vast number of Access Points and Switches.

Fortunately, EnGenius has the answer: the **Neutron Series Distributed Network Management Solution**.

This highly flexible, scalable, fully integrated solution offers simplified configuration and management with enterprise-class performance, feature-rich Managed Access Points, WLAN Controller Switches and ezMaster™ Centralized Network Management, at an incredible price point – **with NO AP licensing, subscription or tech support fees**.

The Neutron Series is ideal for deploying into:

- > Managed Service Providers (MSPs)
- > The Public Sector
- > School Districts
- > Large, Geographically Diverse Organizations
- > Healthcare Facilities
- > Hotels & Resorts

Features and Benefits

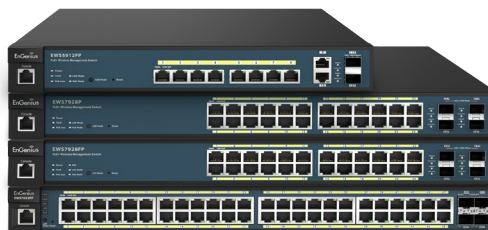
- > Complete Scalability
 - Manage 1 – 1,000+ APs & Switches
 - 10,000+ Concurrent Users
 - Unlimited Number of Distributed Networks
- > Unlimited Flexibility
 - Operate Neutron APs Standalone or Managed
 - Locally Manage up to 50 APs per Switch
 - Manage Unlimited APs & Switches with ezMaster™
 - Deploy ezMaster via Cloud-Based* Service, on a Remote or Local Server
- > Greater Affordability
 - NO AP Licensing, NO Annual Subscriptions, NO Technical Support Fees
 - Affordable Hardware
 - Save Time & Resources
 - Lower TCO per Deployment
- > Neutron Series Distributed Network Management
 - Centralized Management with ezMaster
 - Full Featured WLAN Controller Switches
 - Versatile Access Point Portfolio
- > Optimize Wireless Performance
- > Create Secure, Branded Captive Portals
- > Simplified Deployment & Provisioning
- > Comprehensive Network Protection
- > Rich Reporting & Analytics
- > Enterprise-Class Performance
- > Comprehensive Pre/Post Sales & Customer Support

*Feature available 2016

The EnGenius® Neutron™ Series Distributed Network Management Solution includes:



Neutron Managed Access Points



Neutron WLAN Controller Switches

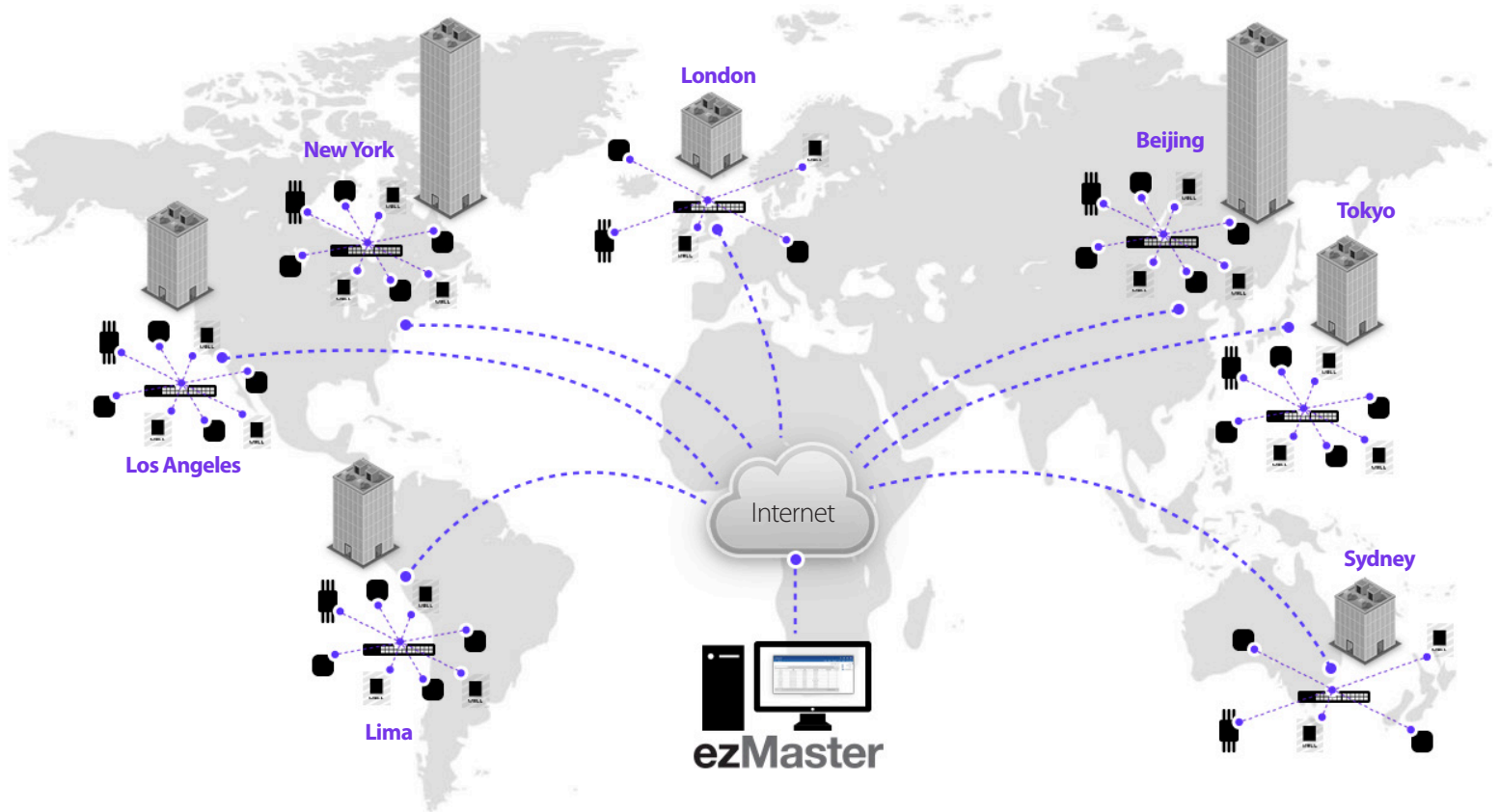


ezMaster™ Network Management Software

Complete Scalability Regardless of Size

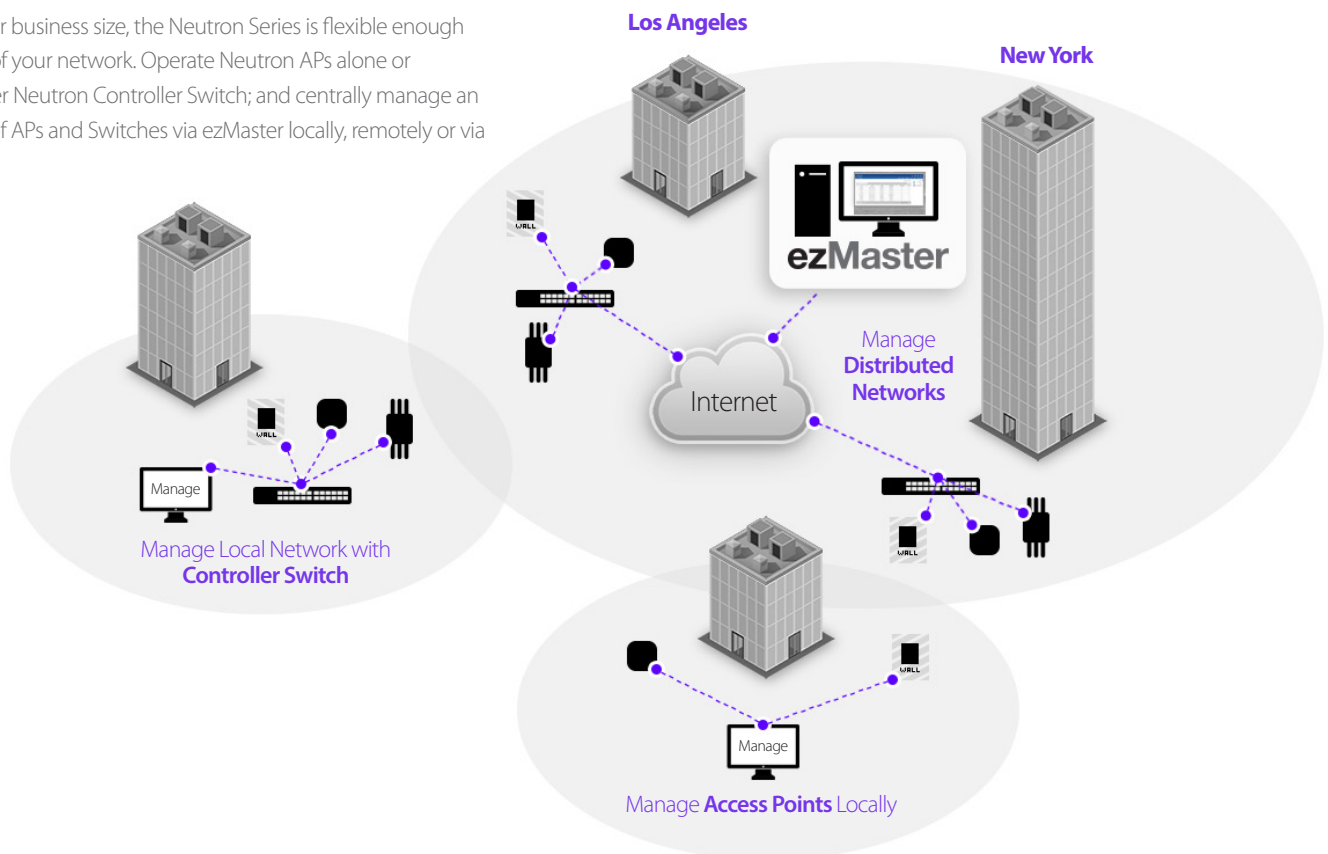
Want to start small or go big? You can do both with the Neutron Series. The Solution makes it easy to deploy and manage a few or 1,000+ APs, and

Switches and 10,000+ concurrent users on an unlimited number of networks distributed across various cities, regions or countries, regardless of their size and infrastructure.



Unlimited Flexibility

No matter what your business size, the Neutron Series is flexible enough to meet the needs of your network. Operate Neutron APs alone or manage up to 50 per Neutron Controller Switch; and centrally manage an unlimited number of APs and Switches via ezMaster locally, remotely or via the Cloud.



Enjoy Lower Capital & Operating Expenses

Many competing solutions require costly hardware, per AP licensing, and annual subscription and tech support fees. Not with the Neutron Series.

Features & Benefits

The Neutron Series delivers enterprise-class features that simplify deployment and management, maximizing wireless performance for any size network, no matter where it's located.

Optimized Wireless Performance

Continuously monitor the RF environment, including neighboring APs, with **Background Scanning**, and enable **automatic** control of AP **transmission power** and **channel allocation** ensuring optimized RF coverage and wireless performance. Configure multiple APs for **Fast Roaming**, securing seamless connectivity as mobile users move between Access Points.

Provide for maximum client performance as **Band Steering** automatically directs clients to the appropriate RF channel, while **Band Balancing** intelligently works to maintain a balanced number of clients per AP.

Since it's also easy to deploy, manage and operate, you'll save valuable time and resources, all translating to affordable, predictable costs – and a lower TCO per deployment.

Distributed Control, Centralized Management with ezMaster™

Centrally manage an **unlimited number** of independent **distributed networks** from a single, at-a-glance dashboard, no matter where they're located. **Manage 1,000+** Neutron APs and Controller Switches and **10,000+** concurrent users.

EzMaster makes centralized network management easy through bulk configuration, provisioning and monitoring; rich analytics, reporting, and much more. Monitor APs with or without an onsite Controller Switch, and have the flexibility to **deploy** ezMaster on a **local** or **remote** server or via a **Cloud**-based service.

Simplified Deployment & Provisioning

Save time and resources with Neutron Series' easy-to-use **web interface, simplified management** and **one-click updates**. **Automated AP provisioning** and **intuitive configuration tools** help streamline mass AP deployments. And since the Neutron Series is easy to deploy, manage and operate, with **no extensive learning curve**, you'll spend less on administrative overhead, travel costs and training.

Neutron Controller Switches, A Full-Featured WLAN Platform

A powerful, **full-featured platform** capable of **managing up to 50 Neutron APs** each, Neutron Controller Switches offer redundant management between APs and ezMaster with **SmartSync Redundancy***; and **future expandability** for broader device connectivity and management. Neutron Switches also act as a **wireless controller**, giving IT administrators visibility into all connected Neutron devices and a full array of **Layer 2 management tools**.

Versatile AP Portfolio Features High-Capacity 11ac

Neutron's versatile line of high-performance, managed, **indoor ceiling-mount** and **outdoor ruggedized APs** range from **Single-Band 11n** models to **high-capacity 3x3 Dual-Band 11ac** versions, all featuring **Power-over-Ethernet (PoE)** convenience. For added versatility, Neutron APs can **operate as a standalone device**, be **managed** through a Neutron Controller Switch or centrally managed via ezMaster software.

Create Secure, Branded Captive Portals

Organizations that offer Internet access to patrons or visitors – notably hotels, retail shops and restaurants – will appreciate Neutron's **Captive Portal** and Guest Network capabilities.

Establish a secure **Guest Network** that blocks access to main corporate computers and create separate Virtual LANs for increased security, network reliability and bandwidth conservation.



Comprehensive Network Protection

With the Neutron Series, your network is protected from attacks at multiple levels through advanced wireless encryption standards such as Wi-Fi **Protected Access Encryption** and authentication database, **802.1X** with **RADIUS** server. Network threats are quickly detected and avoided through **rogue AP detection**, **email alerts** and **real-time wireless invasion monitoring**, allowing for immediate action to divert network hacks and other security threats.

*Feature available Q1 2016

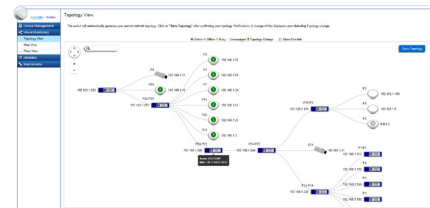
Rich Reporting & Analytics

A wealth of invaluable reporting, analytics and real-time monitoring tools, with email alerts, give IT management instant insight into system efficiencies and issues. With tools like **wireless client monitoring**, and **traffic** and **usage statistics**, potential problems can be pinpointed and addressed before they effect users. Neutron provides **centralized network visibility** in areas such as **traffic flow**, **demand**, **network topology** and more.

- > **Statistics View** provides real-time and historical visibility of traffic flow.



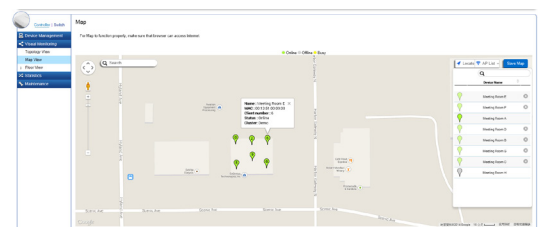
- > **Topology View** automatically maps network deployment and displays device relationships.



- > **Floor View** allows administrators to upload floor plans and drop AP markers for a visual representation of any network on the system.



- > With **Google® Map View** you can quickly drop AP markers and locate deployed APs across cities, regions or countries.



Perfect Flexibility for Managed Service Providers

If you're a managed service provider (MSP) the EnGenius Neutron Series is ideal for you. Easily provision, configure, manage and update network devices for all of your customers – from a single console and login, regardless of network size, location, infrastructure or ISP. Saving you a tremendous amount of time, travel and cost.

Flexible Distributed Network Management

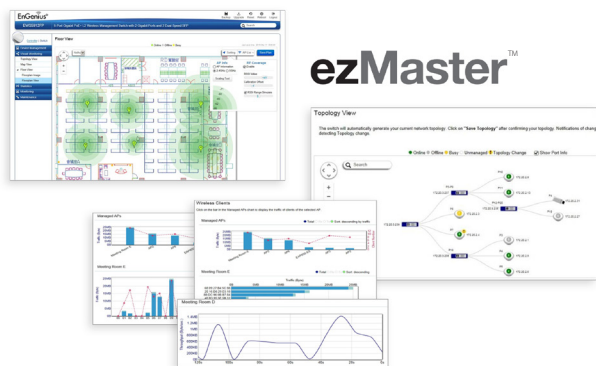
EzMaster Network Management Software expands the flexibility and scalability of Neutron Series Managed Access Points and WLAN Controller Switches.

EzMaster allows organizations, such as branch offices and managed service providers, to easily and affordably deploy, monitor and manage a large number of Neutron APs and Controller Switches across geographically diverse properties. Centrally manage an unlimited number of independent distributed networks in the same subnet or cross-subnet from a single, at-a-glance network dashboard, no matter where they're located.

Deploy ezMaster locally, remotely or via a Cloud-based service with or without an onsite WLAN Controller Switch.

Powerful, Scalable Options

EzMaster scales with your growing business needs. Manage 1,000+ Neutron Access Points and Controller Switches and 10,000+ concurrent users. Together, Neutron APs, Switches and ezMaster provide a flexible, fully integrated solution with redundancy support and future expandability for broader device connectivity.



System Requirements

Recommended environment for managing up to 500 APs

CPU: Intel® Core™ i3 3.6 GHz dual-core or above

RAM: 4 GB minimum

HDD: 500 GB (actual requirement dependent on log size)

OS: Microsoft® Windows® 7 or later + VMware® Player 7.0 or compatible virtualization software

Recommended environment for managing up to 1,000+ APs

CPU: Intel® Core™ i5 3.2 GHz quad-core or above

RAM: 4 GB minimum

HDD: 500 GB (actual requirement dependent on log size)

OS: Microsoft® Windows® 7 or later + VMware® Player 7.0 or compatible virtualization software

Browser Requirements

Internet Explorer 10 or better

Firefox 34.0 or better

Chrome 31.0 or better

Safari 8.0 or better

Network Topology Requirements

At sites where APs are deployed: A DHCP-enabled network for APs to obtain an IP address

Simplified Device Management

EzMaster Network Management Software makes centralized device management easy. How? Through centralized bulk configuration, provisioning and monitoring, a comprehensive at-a-glance network dashboard, rich analytics and reporting, and much more.

ezMaster™ Software Features

> Centralized Management

- Configure, Managed & Monitor 1,000+ Neutron Devices
- Cross-Network AP Management
- AP Group Configuration

> Access Point Configuration & Management

- Auto Channel Selection
- Auto Tx Power
- Background Scanning
- Band Steering (Auto Band Steering & Band Balancing)
- Client Isolation
- Client Limiting
- Fast Roaming
- L2 Isolation
- LED On/Off Control
- Multiple SSID
- RSSI Threshold
- Secure Guest Network
- Traffic Shaping
- VLAN Isolation
- VLAN Tag

> Comprehensive Monitoring

- Device Status Monitoring
- Floor Plan View
- Map View
- Rogue AP Detection
- System Status Monitoring
- Visual Topology View
- Wireless Client Monitoring
- Wireless Coverage View
- Wireless Traffic & Usage Statistics

> Management & Maintenance

- Bulk Firmware Upgrade
- Captive Portal
- Email Alert
- ezRedundancy (coming 2016)
- Kick/Ban Clients
- One-Click Update
- Remote Logging
- Seamless Migration
- SmartSync Redundancy (coming 2016)
- Syslog