

# Email Security appliances and software

Protect your infrastructure from email threats and compliance violations with powerful, easy-to-use solutions.

Email is crucial for your business communication, but it can also expose your business to sabotage and productivity drains if email-based threats such as spam, phishing, spoofing, viruses and zombies flood your mail servers and user inboxes. What's more, government regulations now hold your business accountable for protecting confidential data and ensuring it is not leaked and that email containing sensitive customer data or confidential information is securely exchanged. Whether your organization is a growing small-to medium-sized business (SMB), a large, distributed enterprise or a managed service provider (MSP), you need a cost-effective way to deploy email security and encryption, and the scalability to easily grow capacity for—and delegate management across—organizational units and domains.

SonicWall Email Security appliances and software provide superior protection from inbound and outbound email threats and compliance violations by scanning all inbound and outbound email content and attachments for sensitive data, delivering real-time protection from spam, phishing, viruses, malicious URLs, spoofing, zombies, directory harvest (DHA), Denial of Service (DoS) and other attacks. The solution leverages multiple, patented SonicWall threat detection techniques and a unique, worldwide attack identification and monitoring network.

The solution also includes Domain-based Message Authentication, DKIM (Domain Keys Identified Mail), SPF

(Sender Policy Framework), Reporting and Conformance (DMARC), a powerful email authentication method that helps identify spoofed mail, reducing spam and phishing attacks, and also reports on sources and senders of email, so you can identify and shut down unauthorized senders falsifying email with your address and protect your brand. In addition, it prevents confidential data leaks and regulatory violations with advanced compliance scanning and management, including integrated email encryption cloud service to ensure secure exchange of sensitive data.

SonicWall Email Security is a flexible solution that deploys as a scalable hardware appliance, virtual appliance or software optimized for Microsoft® Windows Server®, and it scales easily to protect 10 to 100,000 mailboxes. Large enterprises can configure the solution for high availability in split mode to centrally and reliably manage large-scale deployments.

Administration of the Email Security solution is intuitive, quick and simple. You can safely delegate spam management to end users, while still retaining ultimate control over security enforcement. You can also easily manage user and group accounts with seamless multi-LDAP synchronization. For large, distributed environments, multi-tenancy support lets you delegate sub-administrators to manage settings at multiple organizational units (such as enterprise divisions or MSP customers) within a single Email Security deployment.



## Benefits:

- Advanced analysis techniques to stop spam, phishing, spoofing, zombie and virus attacks
- 24/7 access to the SonicWall GRID Network to stop new threats as they emerge
- Add-on anti-virus and anti-spyware protection for multi-layer security
- Optional Email Compliance and Encryption subscription services for secure, mobile-ready, email encryption and exchange
- Intelligent automation, task delegation, at-a-glance customizable dashboard and robust reporting for simplified management
- Flexible deployment options for long-term value

## Features

### **SonicWall Email Security Capture Advance Threat Protection Service** —

Detect and block advanced threats until verdict. This service is the only advanced-threat-detection offering that combines multi-layer sandboxing, including full system emulation and virtualization techniques, to analyze suspicious code behavior within emails, to protect customers against the increasing dangers of zero-day threats. And, the Email Security Capture now delivers finer granularity with more extensive file-type inspection, additional in-depth reporting capabilities, and a more streamlined and less obtrusive user-experience.

**Advanced analysis techniques** — Stop spam, phishing, spoofing, zombie and virus attacks using multiple proven, patented techniques including reputation checks that check not only a message's sender IP reputation, but also the reputation of its content, structure, links, images and attachments. Email Security protects against DHA and DoS attacks, and ensures sender validation. Advanced analysis techniques include a Support Vector Machine (SVM) algorithm, adversarial Bayesian filtering, image analysis and gibberish detection to uncover hidden known threats, and new threats.

**SonicWall GRID Network** — Receive the most accurate and up-to-date protection against new spam attacks while ensuring delivery of benign email with real-time threat information from the SonicWall Global Response Intelligent Defense (GRID) network, which collects information from millions of data sources. The SonicWall threat team analyzes that information and performs rigorous testing to establish reputation scores for senders and content, identifying new threats in real-time.

**Anti-virus and anti-spyware protection** — Get up-to-date anti-virus and anti-spyware protection with SonicWall GRID Anti-Virus™. Also add Cyren, Kaspersky and McAfee® anti-virus signatures and malicious URL detection for multi-layer protection that is superior to that provided by solutions that rely on a single anti-virus technology.

Moreover, you can safeguard your network from the time a new virus outbreak occurs until the time an anti-virus signature update is available by adding the predictive technology of SonicWall Time Zero Virus Protection.

**Intelligent automation, task delegation and robust reporting** — Simplify management with intelligent automation, task delegation and robust reporting. Automatically manage email addresses, accounts and user groups. Seamlessly integrate with multiple-LDAP servers. Confidently delegate spam management to end users with the downloadable Junk Button for Outlook® plug-in, while still retaining full control. Locate any email in seconds with the Rapid Message Search Engine. Centralized reporting (even in split mode) gives you easily customizable, system-wide and granular information on attack types, solution effectiveness and built-in performance monitoring and reports are available in PDF and JPEG formats.

**Compliance Policy Management** — This add-on service enables compliance with regulatory mandates by helping you to identify, monitor and report on email that violates compliance regulations and guidelines (e.g., HIPAA, SOX, GLBA, and PCI-DSS) or corporate data loss guidelines. The subscription service also enables policy-based routing of mail for approval, archiving and encryption.

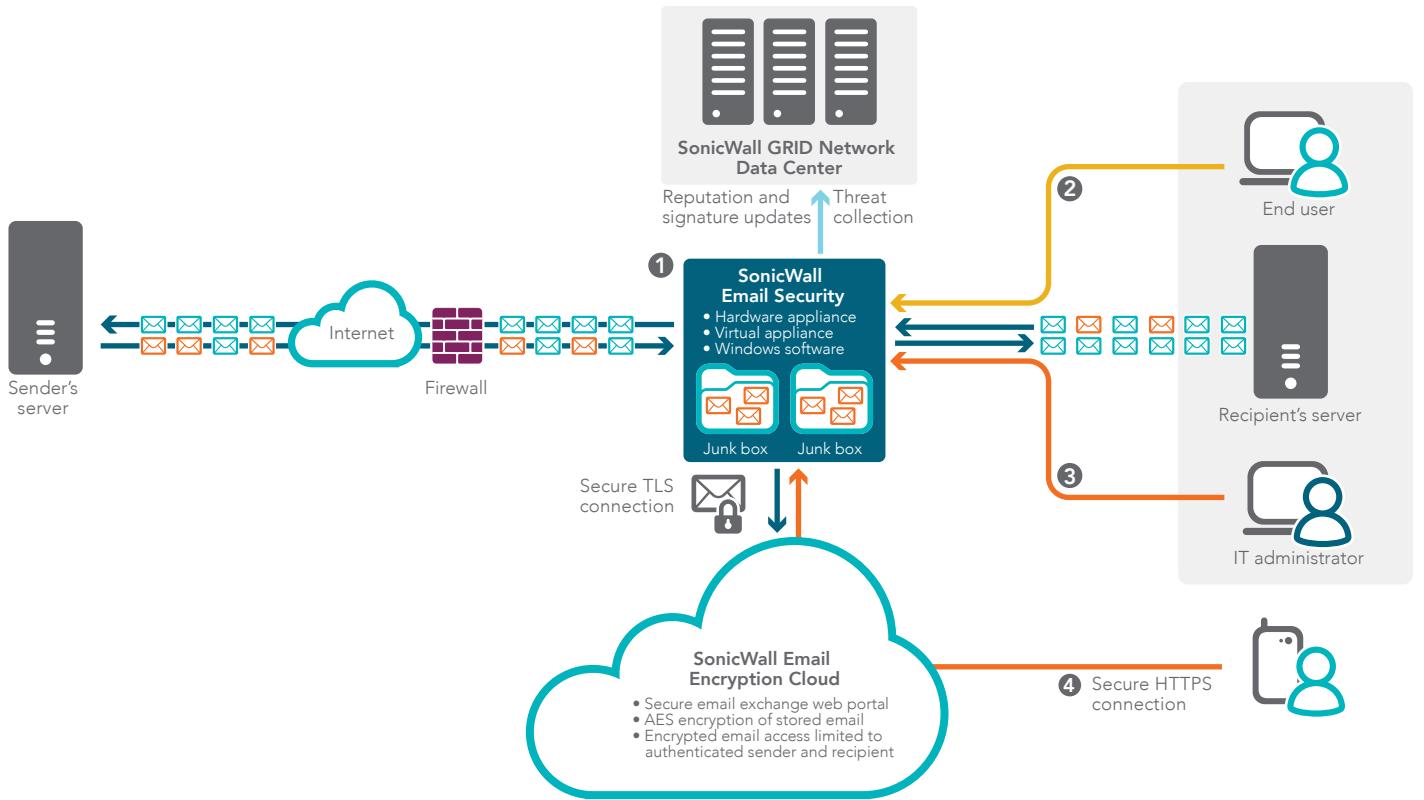
**Email Encryption** — Add a powerful framework for stopping data leaks, managing and enforcing compliance requirements and providing mobile-ready secure email exchange for organizations of all sizes.

Encrypted email can be tracked to confirm the time of receipt and time opened. Intuitive for the recipient, a notification email is delivered to the recipient's inbox with instructions to simply log into a secure portal to read or securely download the email. The service is cloud-based with no additional client software necessary and unlike competitive solutions; the encrypted email may be accessed and read from mobile devices or laptops.

**Flexible deployment options** — Gain scalable, long-term value by configuring your solution for growth and redundancy with minimal upfront costs. You can deploy Email Security as a hardened, high-performance appliance, as software leveraging existing infrastructure or as a virtual appliance leveraging shared computing resources to optimize utilization, ease migration and reduce capital costs. Start with a single system and then as your business grows, add capacity and move to a fail-over enabled, split-mode architecture. Multi-tenancy support allows large enterprise or managed service provider deployments with multiple departments or customers to establish organizational units with one or multiple domains. The deployment may be centrally managed, but still allows a given organizational unit to have its own users, sub-administrators, policy rules, junk boxes and more.

---

1 U.S. Patents 7,814,545; 7,343,624; 7,665,140; 7,653,698; 7,546,348



### 1 Inspect and protect

- Multiple proven, patented<sup>1</sup> techniques: Anti-spam, anti-phishing, anti-spoofing and anti-virus
- Real-time threat updates with GRID Network
- Dell SonicWALL GRID AV, Time Zero AV, McAfee AV, Kaspersky AV and Cyren AV
- Compliance scan and routing

### 2 Managed by end user

- Junk mailbox
- Allow/block list
- Junk summary settings

### 3 Managed by IT administrator

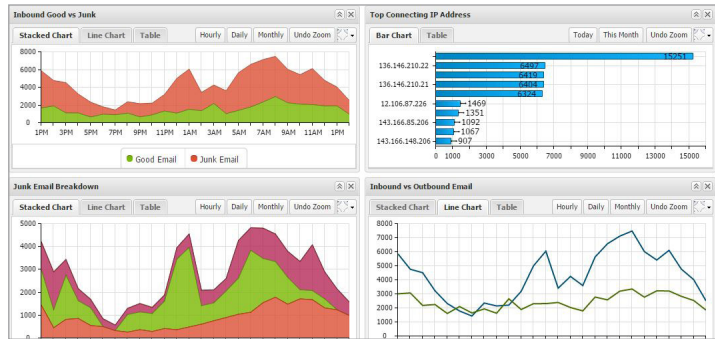
- Set up
- Configure
- Monitor

### 4 Access to encrypted email

- Mobile and desktop access to encrypted email
- Read or download encrypted email
- Send encrypted reply

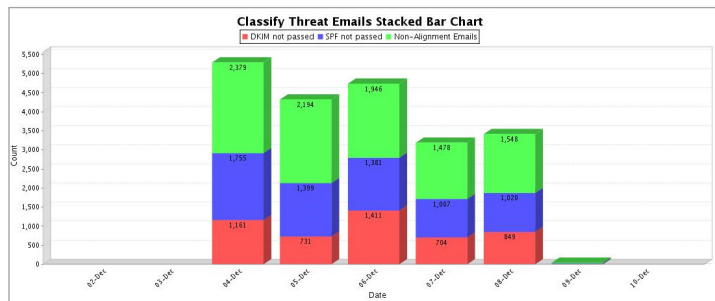
## Reports and monitoring

SonicWall Email Security with customizable, drag and drop, at-a-glance dashboard is easy to set up, easy to manage and easy to own.



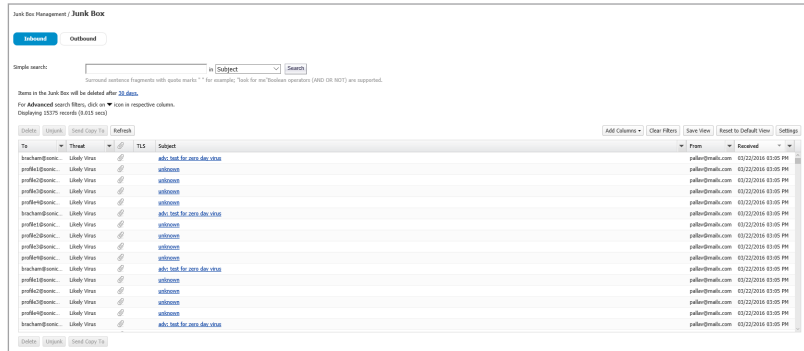
## Anti-spoofing DMARC report

Identify sources and senders of unauthorized email.



## Junk Box summaries

Junk Box summaries optimize end-user email productivity, reduce complaints and improve overall effectiveness.



## SonicWall Email Security deployments

The highly flexible architecture of SonicWall Email Security enables deployments in organizations that require a highly scalable, redundant and distributed email protection solution that can be centrally managed. SonicWall Email Security can be deployed in either **all-in-one** (Figure 1) or **split mode** (Figure 2).

In **split mode**, systems may be configured as a remote analyzer or a control center. In a typical split-mode setup, one or more **remote analyzers** is connected to a **control center**. The **remote analyzer** receives email from one or more domains and applies connection management, email filtering (anti-spam, anti-phishing and anti-virus) and advanced policy techniques to deliver benign email to the downstream email server. The **control center**

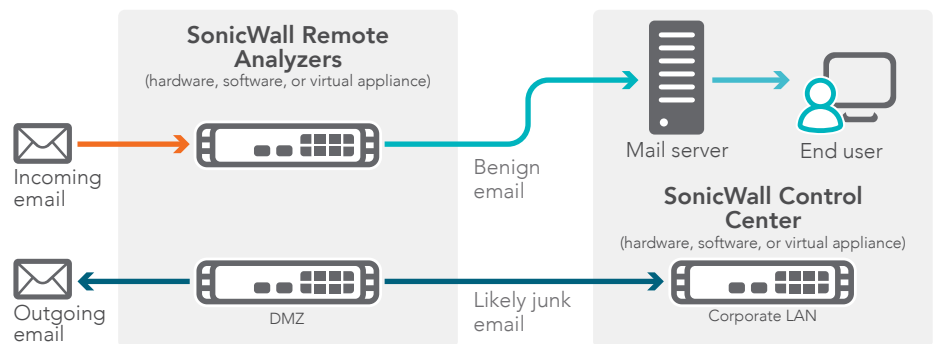
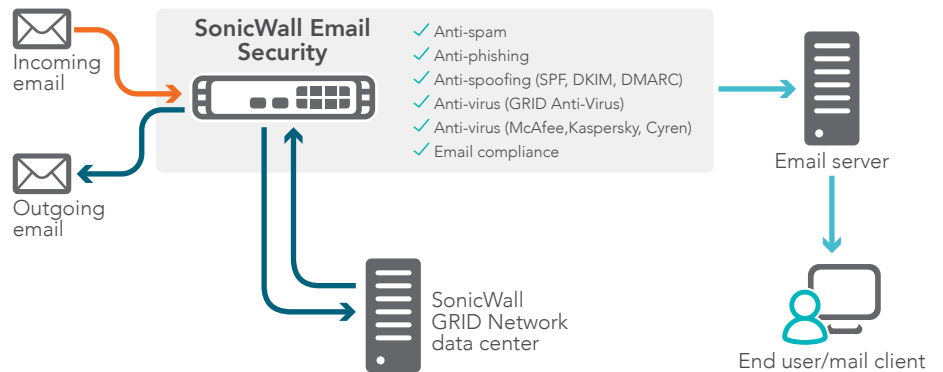
centrally manages all remote analyzers and collects and stores junk email from the remote analyzers. Centralized management includes reporting and monitoring of all related systems. This paradigm allows the solution to cost-effectively scale and protect both inbound and outbound email for growing organizations. Using SonicWall Email Security Virtual Appliances, split mode can be fully deployed on one or multiple servers for optimal efficiencies of scale.

## Flexible, scalable deployment options

**All-in-one configuration** (Figure 1) In an all-in-one configuration, filtering and management take place on the same system.

### High availability deployment

(Figure 2) For load balancing and redundancy, split mode enables organizations to filter at the network perimeter while providing centralized control. Administrators can easily synchronize SonicWall Email Security across multiple LDAP servers in distributed and hosted environments for scalable deployment.



## Specifications

	Appliance, Virtual Appliance	Windows Server	
<b>Complete inbound and outbound email protection</b>			
Anti-spam effectiveness	Yes	Yes	
Connection management with advanced IP reputation	Yes	Yes	
Phishing detection, classification, blocking	Yes	Yes	
Directory harvest, denial of service, NDR protection	Yes	Yes	
Anti-spoofing with support for SPF, DKIM and DMARC	Yes	Yes	
Policy rules for user, group, all	Yes	Yes	
In memory message transfer agent (MTA) for enhanced throughput	Yes	Yes	
Complete inbound and outbound protection in a single system	Yes	Yes	
<b>Easy administration</b>			
Installation	< 1 hour	< 1 hour	
Management per week	< 10 min	< 10 min	
Automatic multi-LDAP sync for users, groups	Yes	Yes	
Compatible with all SMTP email servers	Yes	Yes	
SMTP Authentication support (SMTP AUTH)	Yes	Yes	
Allow/deny end user controls	Yes	Yes	
Customize, schedule and email 30+ reports	Yes	Yes	
Judgment details	Yes	Yes	
At-a-glance, customizable management dashboard	Yes	Yes	
Rapid message search engine	Yes	Yes	
Scalable split-mode architecture	Yes	Yes	
Clustering and remote clustering	Yes	Yes	
<b>Easy for end users</b>			
Single sign-on	Yes	Yes	
Per user junk boxes, junk box summary actionable email	Yes	Yes	
Per user anti-spam aggressiveness, block/allow lists	Yes	Yes	
<b>Email protection subscription with dynamic support—required</b>			
SonicWall GRID anti-virus, anti-spam, anti-phishing auto-updates every minute	Yes	Yes	
24x7 support	Yes	Yes	
RMA (appliance replacement)	Yes	Yes	
Software/firmware updates	Yes	Yes	
<b>Anti-virus subscription—optional</b>			
McAfee, Kaspersky, and Cyren Anti-virus	Yes	Yes	
SonicWall TimeZero anti-virus	Yes	Yes	
Zombie detection	Yes	Yes	
<b>Compliance subscription—optional</b>			
Robust policy management	Yes	Yes	
Attachment scanning	Yes	Yes	
Record ID matching	Yes	Yes	
Dictionaries	Yes	Yes	
Approval boxes/workflow	Yes	Yes	
Email archiving	Yes	Yes	
Compliance reporting	Yes	Yes	
<b>Encryption subscription—optional</b>			
Compliance subscription capabilities plus policy-enforced email encryption and secure email exchange	Yes	Yes	
<b>Total secure subscription—optional</b>			
Includes email protection dynamic 24x7 subscription plus multi-layer anti-virus (McAfee, Kaspersky, Cyren), malicious URL detection and compliance management subscription features	Yes	Yes	
<b>Email Security Appliances</b>			
	5000	7000	9000
Domains	Unrestricted		
Operating system	Hardened SonicWall Linux OS appliance		
Rackmount chassis	1RU	1RU	1RU
CPU(s)	Celeron G1820	i3-4330	E3-1275 v3
RAM	8 GB	16 GB	32 GB
Hard drive	500 GB	1 TB	1 TB
Redundant disk array (RAID)	—	RAID 1	RAID 5
Hot swappable drives	No	Yes	Yes
Redundant power supply	No	No	Yes
SAFE Mode Flash	Yes	Yes	Yes
Dimensions	17.0 x 16.4 x 1.7 in 43.18 x 41.59 x 4.44 cm	17.0 x 16.4 x 1.7 in 43.18 x 41.59 x 4.44 cm	27.5 x 19.0 x 3.5 in 69.9 x 48.3 x 8.9 cm
Weight	16 lbs / 7.26 kg	16 lbs / 7.26 kg	50.0 lbs/ 22.7 kg
WEEE weight	16 lbs / 7.37 kg	16 lbs / 22.2 kg	48.9 lbs/ 22.2 kg
Power consumption (watts)	46	48	158
BTUs	155	162	537
MTBF @25C in hours	130,919	150,278	90,592
MTBF @25C in years	14.9	17.2	10.3
<b>Email Security Software</b>			
Domains	Unrestricted		
Operating system	Microsoft Hyper-V Server 2012 (64-bit) or higher Windows Server 2008 R2 or higher x64 bit only		
CPU	Intel or AMD 64-bit processor		
RAM	8 GB minimum configuration		
Hard drive	160 GB minimum configuration		
<b>Email Security Virtual Appliance</b>			
Hypervisor	ESXi™ and ESX™ (version 5.0 and newer)		
Operating system installed	8 GB (expandable)		
Allocated memory	4 GB		
Appliance disk size	160 GB (expandable)		
VMware hardware compatibility guide	<a href="http://www.vmware.com/resources/compatibility/search.php">http://www.vmware.com/resources/compatibility/search.php</a>		

Appliance and software features – subscriptions available in 25, 50, 100, 250, 500, 1,000, 2,000, 5,000, and 10,000 user packs



## SonicWall Email Security Appliances

**01-SSC-7603** SonicWall Email Security Appliance 5000

**01-SSC-7604** SonicWall Email Security Appliance 7000

**01-SSC-7605** SonicWall Email Security Appliance 9000

**01-SSC-6636** SonicWall Email Security Software

**01-SSC-7636** SonicWall Email Security Virtual Appliance

## Subscriptions

**01-SSC-7405** SonicWall Total Secure Email subscription 10,000 users (1yr)

**01-SSC-7404** SonicWall Total Secure Email subscription 5,000 users (1yr)

**01-SSC-7403** SonicWall Total Secure Email subscription 2,000 users (1yr)

**01-SSC-7398** SonicWall Total Secure Email subscription 1,000 users (1yr)

**01-SSC-7402** SonicWall Total Secure Email subscription 750 users (1yr)

**01-SSC-7397** SonicWall Total Secure Email subscription 500 users (1yr)

**01-SSC-7401** SonicWall Total Secure Email subscription 250 users (1yr)

**01-SSC-7406** SonicWall Total Secure Email subscription 100 users (1yr)

**01-SSC-7400** SonicWall Total Secure Email subscription 50 users (1yr)

**01-SSC-7399** SonicWall Total Secure Email subscription 25 users (1yr)

Visit [www.sonicwall.com](http://www.sonicwall.com) for additional user packs.

## About Us

Over a 25 year history, SonicWall has been the industry's trusted security partner. From network security to access security to email security, SonicWall has continuously evolved its product portfolio, enabling organizations to innovate, accelerate and grow. With over a million security devices in almost 200 countries and territories worldwide, SonicWall enables its customers to confidently say yes to the future.

## SonicWall, Inc.

5455 Great America Parkway | Santa Clara, CA 95054  
Refer to our website for additional information.  
[www.sonicwall.com](http://www.sonicwall.com)

© 2017 SonicWall Inc. ALL RIGHTS RESERVED. SonicWall is a trademark or registered trademark of SonicWall Inc. and/or its affiliates in the U.S.A. and/or other countries. All other trademarks and registered trademarks are property of their respective owners.  
DataSheet-EmailSecuritySeries-US-KS-25865

