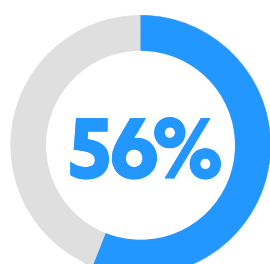


# WHY YOU NEED EDR



THERE IS NO SUCH THING AS PERFECT SECURITY

## TWO THIRDS OF GLOBAL ORGANIZATIONS HAVE BEEN BREACHED



56% of these breaches going undiscovered for months



280 days is global average for identifying and containing a data breach

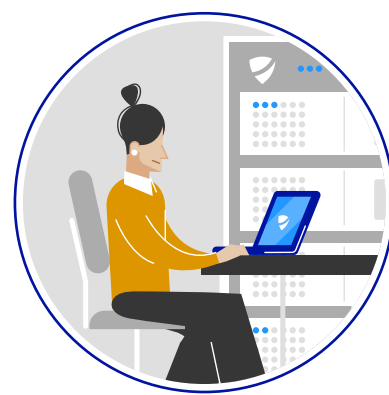
(Source: Ponemon Cost of a Data Breach Report 2020)

## THAT IS WHY YOU NEED MONITORING AND REACTION CAPABILITIES

Basing your cybersecurity on strong preventive controls is no longer enough. There is no such thing as perfect security. Modern advanced threats and targeted attacks will eventually be able to find their way past any defense.

### ENDPOINT PROTECTION (EPP)

is certainly the first step in effectively protecting your environments against mass attacks and other malware, but you also need to have monitoring and reaction capabilities in place.



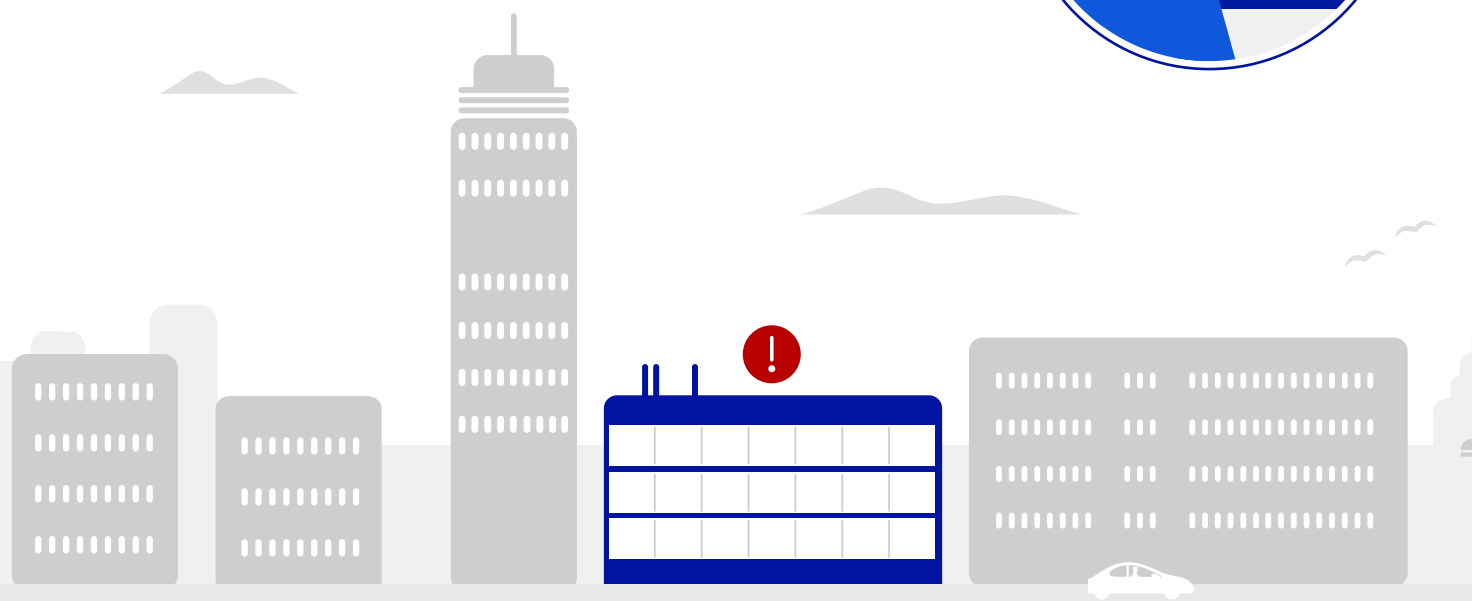
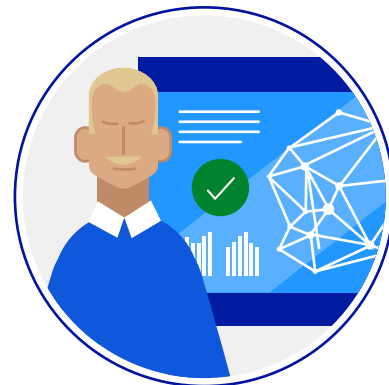
### ENDPOINT DETECTION AND RESPONSE (EDR)

is the next layer of security when your preventive defenses fail to catch an advanced attack or one of your devices misses an important patch. F-Secure's EPP and EDR are seamlessly integrated and managed through a centralized management portal. No additional servers are needed.



### ELEVATE TOUGH CASES TO F-SECURE EXPERTS

You can forward tough incident cases to F-Secure incident response experts with our built-in Elevate to F-Secure feature. Our experts will investigate the threat and give you advice on how to remediate.



Book a demo to see how our EDR solution works in practice to protect your business at [www.f-secure.com/EDR](http://www.f-secure.com/EDR)

[f-secure.com/business](http://f-secure.com/business) | [twitter.com/fsecure](https://twitter.com/fsecure) | [linkedin.com/f-secure](https://linkedin.com/f-secure)