



The SonicWALL TZ 190

TZ 190

Simple and Secure Wireless WAN access for fixed and mobile networks

- Flexible PC Card based 3G cellular wireless access
- Support for both GSM and CDMA based 3G networks
- Automated failover and fallback
- Powerful deep packet inspection firewall
- Integrated gateway anti-virus, anti-spyware and intrusion prevention
- Intuitive configuration wizards
- Global management and reporting

Today's businesses increasingly rely on the Internet to transmit mission-critical company information securely between headquarters and remote locations. Small businesses, retail stores, hotels, banks and gas stations exchange customer purchase and inventory information with every transaction. A critical success factor in each case is the ability to transmit this information securely and to ensure that network connectivity is always available, even in areas where wired networks - DSL, leased line, ISDN and others - are either not available or prohibitively expensive. Relying on dial-up for Internet access is slow and using it as a backup to DSL introduces a single point of failure because both share the same physical land-line. In addition, businesses need to rapidly build secure mobile and temporary networks for seasonal kiosks, mobile point-of-sale carts, overflow ATM machines, emergency response, disaster recovery applications and more.

The SonicWALL TZ 190 is a high-performance, multi-layered network security platform that integrates Type II PC Card based 3G cellular wireless support, automated failover/fallback technologies and a deep packet inspection firewall. In addition to using cellular modem as the primary Internet connection, the TZ 190 ensures constant access to critical data by automatically failing over to the cellular modem should the primary connection fail.

The TZ 190 is built on SonicOS Enhanced, SonicWALL's powerful operating system which delivers advanced business continuity and networking features including ISP failover, policy-based NAT, object-based management and more. The TZ 190 also integrates real-time gateway anti-virus, anti-spyware, intrusion prevention and anti-spam capabilities for protection against viruses, spyware, worms, Trojans and other malicious threats.

Features and Benefits

Flexible PC Card based 3G cellular wireless access enables wireless network backup or primary for fixed or mobile applications.

Worldwide wireless WAN coverage is ensured through **support for both GSM and CDMA based 3G networks**.

Integrated and **automated failover and fallback** ensures continuous uptime for IPSec VPN tunnels by failing over to the 3G cellular WAN connection in the event of broadband failure.

A configurable, high performance **deep packet inspection firewall** provides extended protection for key Internet services such as Web, e-mail, file transfer, Windows services and DNS.

Support for **integrated gateway anti-virus, anti-spyware and intrusion prevention** delivers real-time protection against the latest blended threats including viruses, spyware, worms, Trojans, software vulnerabilities and other malicious code.*

Intuitive configuration wizards simplify even the most complicated tasks, including VPN set-up and NAT configuration

Award-winning Global Management System (GMS) provides comprehensive **global management and reporting** tools for simplified configuration, enforcement and management of global security policies, VPN and services, all from a central location

*Requires Gateway Anti-Virus, Anti-Spyware and Intrusion Prevention Service subscription



Specifications

SonicWALL TZ 190

Firewall

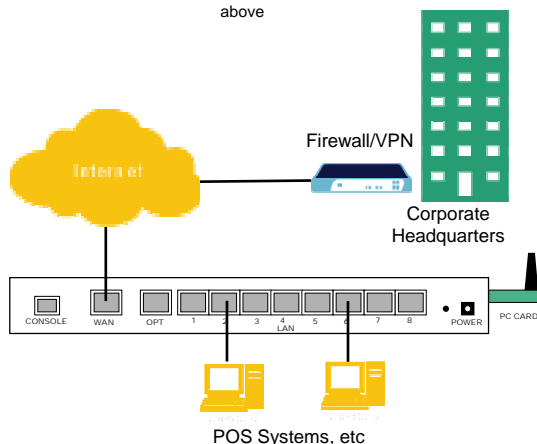
Nodes supported	Unrestricted
Stateful Packet Throughput	90+ Mbps
Gateway Anti-Virus Throughput	10+ Mbps
Intrusion Prevention Throughput	10+ Mbps
Connections	10,000
Policies	250
Denial of Service	22 classes of DoS, DDoS and Protection scanning attacks

VPN

3DES Throughput	30+ Mbps
AES Throughput	30+ Mbps
Site to Site VPN	10 tunnels max
Remote Access VPN	Upgradeable to 25 simultaneous users
Encryption	DES, 3DES, AES (128, 192, 256)
Authentication	MD5, SHA-1
Key Exchange	IKE, Manual Key, Certificates (X.509)
XAUTH/RADIUS	Yes
L2TP/IPSec	Yes
Dead Peer Detection	Yes
DHCP over VPN	Yes
IPSec NAT Traversal	Yes
Redundant VPN Gateway	Yes

Deep Inspection Security Services

Gateway Anti-Virus, Anti-Spyware and Intrusion Prevention	Extensive signature database. Peer-to-peer and instant messaging control and signature updates through Distributed Enforcement Architecture between all interfaces
Content Filtering Service (CFS) Standard Edition	URL, keyword and content scanning, ActiveX®, Java Applet, and Cookie blocking2
Gateway-enforced Network Anti-Virus	HTTP/S, SMTP, POP3, IMAP and FTP, Enforced McAfee™ Clients3 E-mail attachment blocking
Bundled Features	90 days 8x5/international support, Global VPN Clients and services as described above



SonicWALL Value-added Security Services

SonicWALL Internet security appliances integrate seamlessly with an expanding array of value-added security services to provide a comprehensive security solution. Gateway anti-virus, anti-spyware, intrusion prevention and content filtering can be deployed over both the wired and wireless LANs.

All specifications are preliminary and subject to change.

3G Wireless WAN

Cellular Signal Strength Indicator	Variable rate LED and Graphical User Interface
PC Cards Supported	Option Globetrotter (HSDPA) Sierra Wireless Aircard 860 (HSDPA) Novatel S620 (EV-DO) Novatel V620 (EV-DO)
Bandwidth Usage Reporting	Day, week, month and year upload and download traffic statistics
Card insert/removal Alerting	Alerts sent through wired WAN interface to remote administrator or Global Management System
WWAN Bandwidth per access rule,	FIFO, CBQ, RFC 2309, per-interface and guaranteed bandwidth, maximum bandwidth, priority
Carriers Supported	Cingular Wireless, Sprint PCS Wireless, Verizon Wireless, Vodafone, Telecom Italia Mobile, Telefonica, T-Mobile, TDC Song, Orange

LAN

LAN Interfaces	(8) 10/100 Ethernet
PortShield	Ultimate port flexibility for custom security zones
Rate Limiting	64 Kbps, 128 Kbps, 256 Kbps, 512 Kbps, 1 Mbps, 4 Mbps, 10 Mbps, 20 Mbps
Port Speed	10 Mbps, 100 Mbps, Auto, Off
Duplex	Full, Half, Auto
Traffic Stats	TX/RX byte count, TX/RX

Networking

DHCP	Internal server, relay
NAT Modes	1:1, many:1, 1:many, many:many, flexible NAT, PAT
Policy Based Routing	Routing decisions based on combination of source IP, destination IP, service
WAN Modes	NAT and Transparent modes with static or dynamic addressing
DDNS Support	dyndns.org, yi.org, no-ip.com and change-ip.com
Authentication	RADIUS, LDAP, AD, Internal database (max 50 users)

Hardware

Interfaces	(8) 10/100 LAN, (1) 10/100 WAN, (1) 10/100 OPT
Processor	Cavium Nitrox SOC
Memory (RAM)	128 MB
Flash	16 MB
Input Power	100 to 240 VAC, 50-60 Hz, 1 A
Certifications (planned)	ICSA Firewall 4.1, ICSA IPSec VPN 1.0d, FIPS 140-2, VPNC AES, Common Criteria EAL-2
Dimensions	10 x 7 x 1.2 inches (25.4 x 17.8 x 3.0 cm)
Weight	2 lbs (0.92 kg)
Major Regulatory Compliance	FCC Class A, ICES Class A, CE, C-Tick, VCCI Class A, BSMI Class A, MIC, NOM, UL, cUL, TUV/GS, CB
Environment	40-105° F, 5-40° C
Humidity	10-90% non-condensing

SonicWALL TZ 190

SonicWALL TZ 190 (US/Canada)
01-SSC-6850

SonicWALL TZ 190 (International)
01-SSC-6851

SonicWALL TZ 190 (Japan)
01-SSC-6852

SonicWALL TZ 190 (Demo/NFR)
01-SSC-6853

SonicWALL, Inc.
1143 Borregas Avenue
Sunnyvale CA 94089-1306

T +1 408.745.9600
F +1 408.745.9300

www.sonicwall.com

